

CALA

PARASOL
REF.: 84902



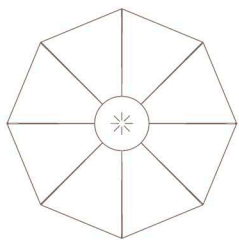
Material

Structure of painted aluminum. Canopy available in fabric or Batyline.

Dimensions



261 cm
102.7 in



Ø 300 cm
118 in

Weight: 17 Kg / 37.4 lb

Volume: 0,12 m³

Date: 22-11-2024

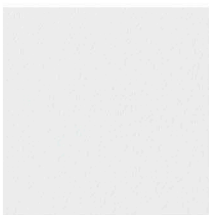
CALA

PARASOL
REF.: 84902

Acabados

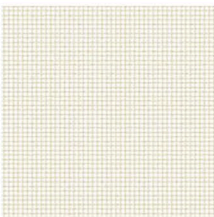
Aluminio pintado en polvo:

70 Blanco
Nieve



Batyline:

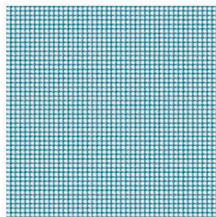
35 Batyline



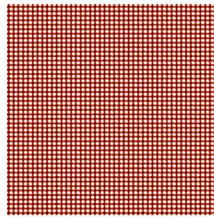
37 Batyline



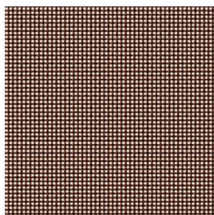
39 Batyline



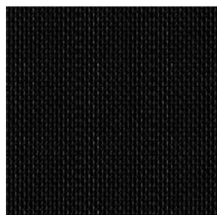
40 Batyline



38 Batyline



57 Batyline



Tela:

Grupo 1 - 21



Fecha: 22-11-2024
