

WEAVE

PLANTER
REF.: 78154



Materials

Powder coated aluminium structure. Rope.

Dimensions

Length x width x height:

Ø 42 x 54,2 cm. / Ø 16.54 x 21.34 in.

Weight with tray: 8,9 Kg. / 19.6 lb.

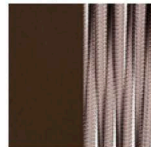
Weight without tray: 8,3 Kg. / 18.3 lb.

Volume: 0,13 m³.

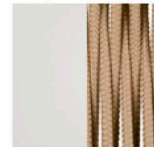
Finish

Weavings: Rope 8 mm Ø.

Taupe Grey
60 with
Taupe Rope



Cream 61
with Nougat
Rope



Black 59
with Black
Rope

