

WEAVE

RECLINING ARMCHAIR
REF.: 77198



Materials

Powder coated aluminium structure. Rope. Reclining with wheels.

Dimensions

Length x width x height:
120 x 85 x 85 cm. / 47.2 x 33.5 x 33.5 in.
Seating height: 33 cm. / 13 in.
Armrests height: 52 cm. / 20.5 in.
Weight: 30,5 Kg. / 67 lb.
Volume: 0,65 m³

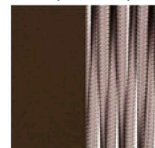
Cushion content

Polyurethane Foam 35Kg HR Density.

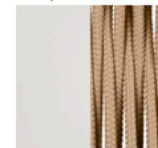
Finish

Weavings: Rope 8 mm Ø.

Taupe Grey
60 with
Taupe Rope



Cream 61
with Nougat
Rope



Black 59
with Black
Rope



Fabric

100% Solution Dyed Acrylic with stain and mildew resistant treatment.
Avoid condensation from hot and humidity. Good oil repellency.
Light fastness 7/8.
Warranty 5 years.

See available fabrics samples.