

## WEAVE

CLUB LOUNGE CHAIR  
REF.: 77108



### Materials

Powder coated aluminium structure. Rope.

### Dimensions

Length x width x height:  
77 x 72 x 72 cm. / 30.3 x 28.3 x 28.3 in.  
Seating height: 41 cm. / 16.1 in.  
Armrests height: 65 cm. / 25.6 in.  
Weight: 16,5 Kg. / 36 lb.  
Volume: 0.47 m<sup>3</sup>.

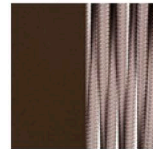
### Cushion content

Polyurethane Foam 35Kg HR Density.

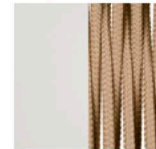
### Finish

Weavings: Rope 8 mm Ø.

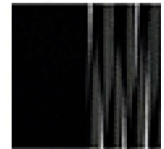
Taupe Grey  
60 with  
Taupe Rope



Cream 61  
with Nougat  
Rope



Black 59  
with Black  
Rope



### Fabric

100% Solution Dyed Acrylic with stain and mildew resistant treatment.  
Avoid condensation from hot and humidity. Good oil repellency.  
Light fastness 7/8.  
Warranty 5 years.

See available fabrics samples.