

COLORS

TABLE BASE
REF.: 74214



Materials

Powder coated aluminum.

Dimensions

Length x width x height:
62,5 x 62,5 x 72,5 cm / 24.6 x 24.6 x 28.5 in
Weight: 13,5 Kg / 29 lb
Volume: 0.37 m³

Finish

Color:

70 White
Snow



34 Mineral
White



71 Blue
Sky



74 Sand



75 Rust



60 Taupe



79 Ficus



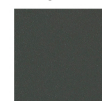
59 Black



72 Terracota



56 Gunmetal
Grey



ROUND TOPS

Ø 70 (REF.: 74314)
Ø 80 (REF.: 74309)
Ø 90 (REF.: 74307)

Materials



HPL or porcelain



Natural or weathered grade A teak,
FSC-certified



HPL dimensions

Length x width x height:
Ø 70 x 1 cm / Ø 27.6 x 0.4 in
Weight: 6,6 Kg / 14.6 lb
Volume: 0,04 m³

Ø 80 X 1 cm / Ø 31.5 x 0.4 in
Weight: 8,5 Kg / 18.7 lb
Volume: 0,05 m³

Ø 90 X 1 cm / Ø 35.4 x 0.4 in
Weight: 10,6 Kg / 23.4 lb
Volume: 0,06 m³

Porcelain dimensions

Length x width x height:
Ø 70 x 1,2 cm / Ø 27.6 x 0.5 in
Weight: 12,4 Kg / 27.3 lb
Volume: 0,04 m³

Ø 80 x 1,2 cm / Ø 31.5 x 0.5 in
Weight: 16,1 Kg / 35.5 lb
Volume: 0,05 m³

Ø 90 x 1,2 cm / Ø 35.4 x 0.5 in
Weight: 20,1 Kg / 44.3 lb
Volume: 0,06 m³

Teak dimensions

Length x width x height:
Ø 70 x 2 cm / Ø 27.6 x 0.8 in
Weight: 3,6 Kg / 7.9 lb
Volume: 0,04 m³

Ø 80 x 2 cm / Ø 31.5 x 0.8 in
Weight: 4,6 Kg / 10.1 lb
Volume: 0,05 m³

Ø 90 x 2 cm / Ø 35.4 x 0.8 in
Weight: 5,6 Kg / 12.3 lb
Volume: 0,06 m³

HPL finish



Porcelain finish



Teak finish



Fecha: 10-11-2023

Essential Information: Maintenance Teak Guide

SQUARE TOPS

70 x 70 (REF.: 74315)

80 x 80 (REF.: 74310)

90 x 90 (REF.: 74311)

Materials



HPL or porcelain



Natural or weathered grade A teak,
FSC-certified



HPL dimensions

Length x width x height:

70 x 70 x 1 cm / 27.6 x 27.6 x 0.4 in

Weight: 6,6 Kg / 14.6 lb

Volume: 0,04 m³

80 x 80 X 1 cm / 31.5 x 31.5 x 0.4 in

Weight: 8,5 Kg/ 18.7 lb

Volume: 0,05 m³

90 x 90 X 1 cm / 35.4 x 35.4 x 0.4 in

Weight: 10,6 Kg/ 23.4 lb

Volume: 0,06 m³

Porcelain dimensions

Length x width x height:

70 x 70 x 1,2 cm/ 27.6 x 27.6 x 0.5 in

Weight: 12,4 Kg / 27.3 lb

Volume: 0,04 m³

80 x 80 x 1,2 cm/ 31.5 x 31.5 x 0.5 in

Weight: 16,1 Kg / 35.5 lb

Volume: 0,05 m³

90 x 90 x 1,2 cm/ 35.4 x 35.4 x 0.5 in

Weight: 20,1 Kg / 44.3 lb

Volume: 0,06 m³

Teak dimensions

Length x width x height:

70 x 70 x 2 cm/ 27.6 x 27.6 x 0.8 in

Weight: 3,6 Kg / 7.9 lb

Volume: 0,04 m³

80 x 80 x 2 cm/ 31.5 x 31.5 x 0.8 in

Weight: 4,6 Kg / 10.1 lb

Volume: 0,05 m³

90 x 90 x 2 cm/ 35.4 x 35.4 x 0.8 in

Weight: 5,6 Kg. / 12.3 lb

Volume: 0,06 m³

HPL finish

Beige



Black



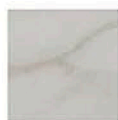
Solid White



Solid Taupe



Marbled white



Wood

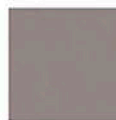


Porcelain finish

81 Natural White



82 Lava Grey



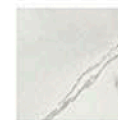
87 Ochre Grey



86 Basalt Grey



85 Veined off White



Teak finish

Natural teak



Weathered teak



Fecha: 10-11-2023

Essential Information: Maintenance Teak Guide