
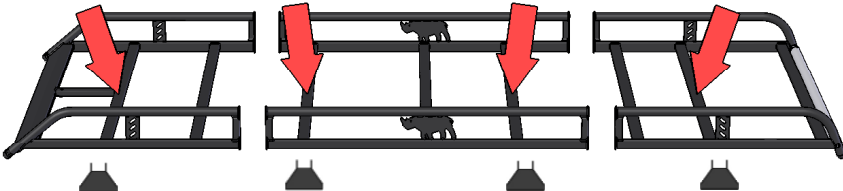

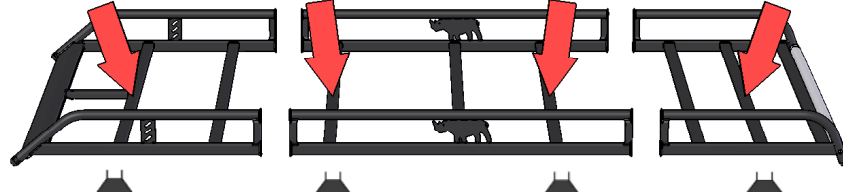

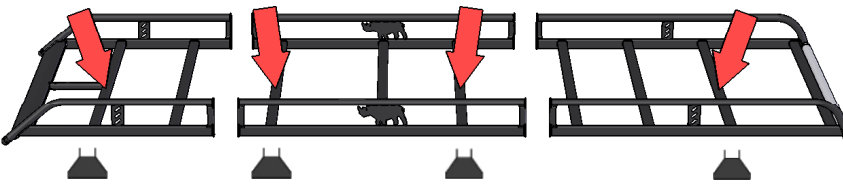

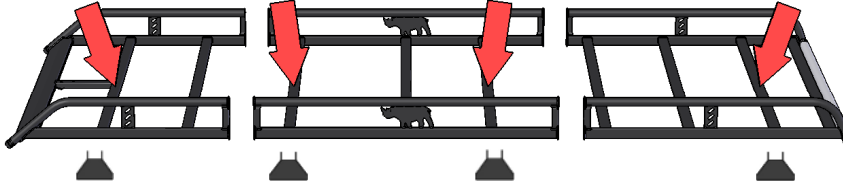
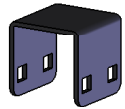


# Reference Sheet: Position of Legs on Racks

<b>7H1.071.204</b> <b>VW507</b>			<b>TRANSPORTER T5/ T5GP</b> SWB, LOW ROOF, TWIN DOORS KR, NORMALDACH, TÜREN  45kg	
FRONT VORNE DK	CENTRE MITTE 35	REAR HINTEN RJ	<b>TRANSPORTER T5/ T5GP</b> SWB, LOW ROOF, TAILGATE KR, NORMALDACH, HECKKLAPPE  44kg	
<b>7H3.071.204</b> <b>VW509</b>			<b>TRANSPORTER T5/ T5GP</b> LWB, LOW ROOF, TWIN DOORS LR, NORMALDACH, TÜREN  49kg	
<b>7H3.071.204.A</b> <b>VW510</b>			<b>TRANSPORTER T5/ T5GP</b> LWB, LOW ROOF, TAILGATE LR, NORMALDACH, HECKKLAPPE  48kg	

KR- Kurzer Radstand, LR- Langer Radstand

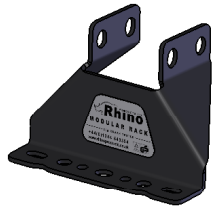
Customer Fitting Instructions, Page 2 of 4  
Anleitung zur Selbstmontage, Seite 2 von 4



(MS161) x 8



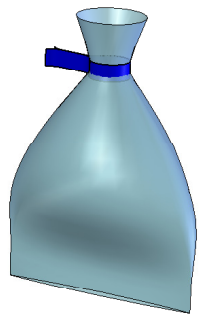
(MS168) x 4



(MS199) x 4

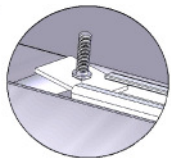


(PS023) x 8

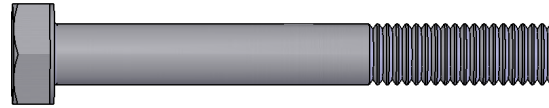


(FK126) x 1

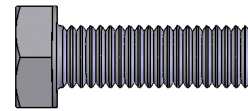
(ONLY required for vehicles with a T-Track roof system)  
(1 x Zubehörkit für Fahrzeuge mit Dachschienen)



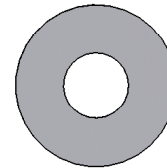
(1:1)



M8 x 65 (FB012) x 16



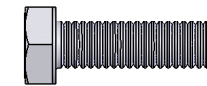
M8 x 25 (FS062) x 8



M8 (FW016) x 48



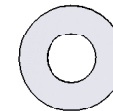
M8 (FN006) x 24



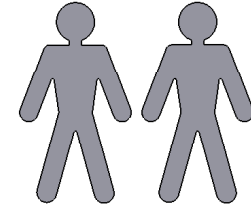
M6 x 20 (FS001) x 8



M6 (FW004) x 8



M6 (FW001) x 8



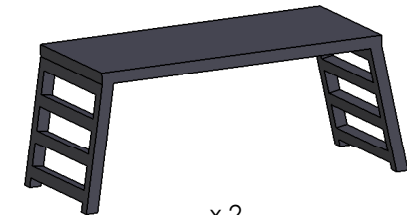
x 2



#10mm x 1



#13mm x 2



x 2

